

Investing in Tomorrow: Connecting Campus & Community through Early Learning

CATYC 2025

Introductions

Jennifer Sikes

Child Development and Education Department
Coordinator

Ellen Miller

Social Sciences, Reading, and Guidance
Department Coordinator
Education Associate Professor

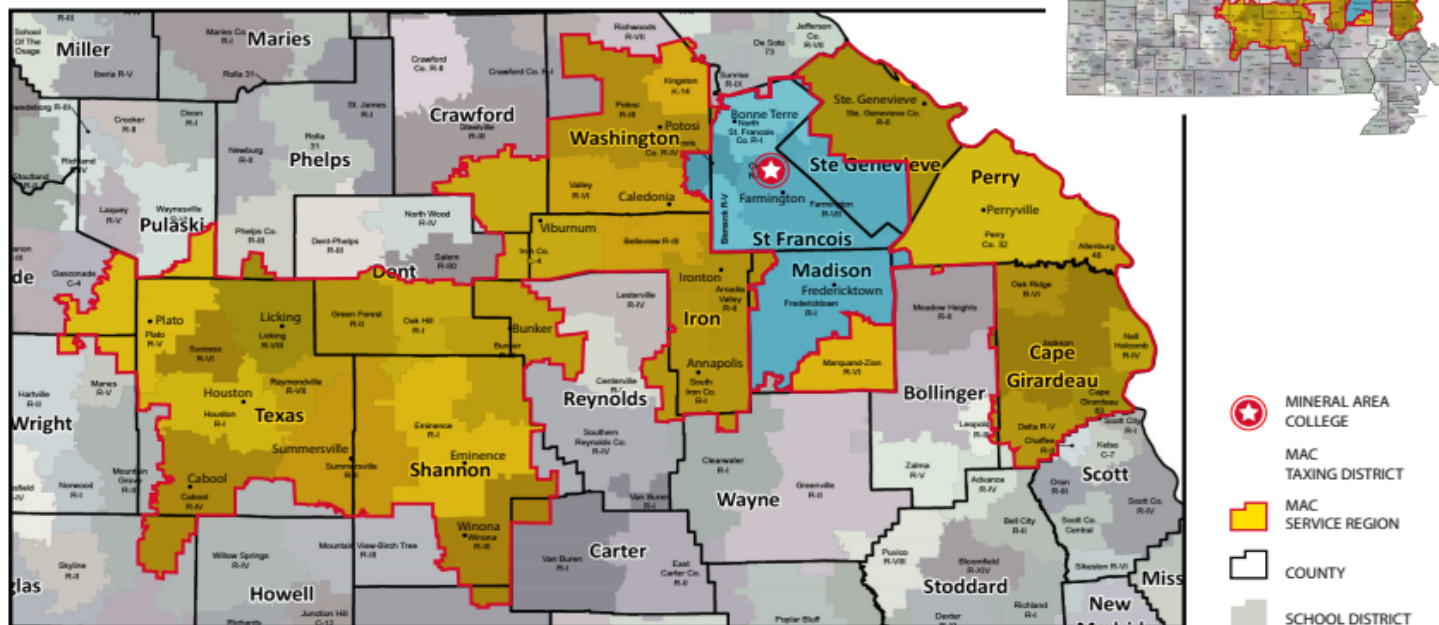
Leslie Evans

Accreditation and Assessment Coordinator

Mineral Area College



Service Region and Taxing District



www.MineralArea.edu

School Districts Map sourced from Missouri Department of Elementary and Secondary Education
Rev. 6/2020

Mineral Area College

28 Associate Degree Programs

26 Credit-Bearing Certificates Offered

Fall 2025 FTE: 1801



Criterion One: Mission

The institution's mission is clear and articulated publicly; it guides the institution's operations.

1.B. The institution's mission demonstrates commitment to the public good.

Mission



Mineral Area College serves our communities by providing excellent, affordable opportunities for learning, personal growth, and career development in a safe and welcoming environment.



MINERAL AREA COLLEGE

Early Learning Academy

What does the perfect preschool look like?



The Need



State Initiatives

- Missouri DESE & Workforce Development promoting **short-term certificates**
- Focus areas:
 - Child Development
 - Education
 - Nursing
- High-quality facility will support **practicum experiences** for students

The Need

Quality & Assessment

- Quality Assurance Survey
- Needs Assessment
- \$6.5 million awarded by the State of Missouri to **improve early childhood care**



The Need



Local Childcare Challenges

- Many childcare facilities shut down due to poor management
- Resulting issues:
 - Overcrowded programs
 - Long waitlists (up to **2 years** for some children)

Starting the ELA

Grants & Funding

- Missouri Preschool Project – Early Childhood Grant (\$6.5M funding pool)
- Playground grants
- Child Care Development Grant (community colleges & universities only; typically \$20,000 funded)

Department Obligations

- A collaborative effort across:
 - Business Office
 - Technology/Marketing
 - Maintenance
 - Human Resources



Starting the ELA



Project Timeline

- Engineer & architect planning
- Building permits & design
- Rehab & playground installation
- Licensing application
- Purchasing & assembling materials
- Advertising & family commitments
- Hiring & staff training
- Official opening

Starting the ELA



Building Possibilities

Continuing Ed • North College Campus • Fire Academy

Facility & Renovations

Continuing Ed Rehab – \$25,000

- Bathrooms, 2–3 classrooms (with sinks)
- Multipurpose/gross motor room
- Café & training area (convertible spaces)
- Lab classroom with a viewing window into the early childhood room
- **Total Estimate: \$200,000**

Starting the ELA

- Classroom Setup, Supplies & Curriculum – **\$75,000**
- Playground – **\$175,000**

Curriculum & Training

- Curriculum & Subscription (3 years) – **\$25,000**
 - Renewal- **\$3,500**
- Professional Development – **\$5,000**
 - CYY Conference (Lake of the Ozarks)



Starting the ELA



Tuition & Programs

- Tuition-**\$200/week**
- Yearly application, enrollment, & supply fee- **\$150**
- Daily Management Program (Procure)- **\$700/year**

Staffing

- Director / Curriculum Coordinator – **\$25/hr**
- Assistant Director – **\$20/hr**
- 3 Classroom Teachers – **\$17/hr**
- 3 Paraprofessionals – **\$15/hr**
- Receptionist – **Work Study Funded**

Building Renovations



Program and Room Design

- Nature-Based
 - Project Construct Approach
 - Family Style Dining
 - Creative Curriculum
- (MAC Students in the Associate of Arts in Teaching and Child Development programs are taught this curriculum.)



Program and Room Design



Playground



Maintaining

Five-Year Financial Plan

- **Tuition Increases (Next 3 Years):**
 - Covers cost of living/step raises
 - Accounts for insurance increases
- **Enrollment Fee:**
 - Supports consumables
 - Funds staff professional development
- **Grants (Available 5 Years):**
 - Replace/upgrade equipment
 - Provide tuition breaks to families
 - Offset food costs through CACFP program



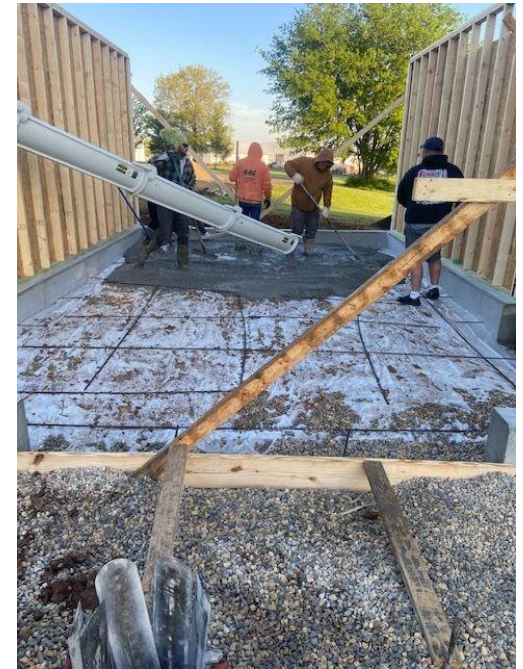
Academic Support

MAC Athletics



Academic Support

MAC Agriculture, Animal Assisted Therapy and Construction Programs



Academic Support

Campus Activities



Administrative Support



ELA Impact

Support for Students & Staff

- On-campus childcare for students & staff
 - Improves **student retention**
 - Supports **recruitment of highly qualified instructors & staff**

Leadership & Recognition

- Raised the bar for **high-quality childcare** in the region
- Continue to be a **community leader**
- Serve as a **model school for the state**
- Recognized by **Governor Parson** in the State of the State address



ELA Impact



Student & Employee Success

- 15 students/employees earned **associate degrees**
- 5 continued to earn **bachelor's degrees** through CMU partnership

Practicum & Clinical Experiences

- 50 Child Development & Education students completed **practicums at ELA**
- Nursing program: **10 clinical hours** completed at ELA (50 students/year)

Families Served

- 10 nursing students have children enrolled in ELA
- 7 employees have children or grandchildren enrolled
- Several families are currently on the **waiting list**

Parent Reviews/Testimonies

Opportunities

Training & Revenue Opportunities

- Provide and host trainings on campus
- Partnerships with:
 - TEACH
 - Child Care Resource & Referral
 - Educare
- Generates **additional revenue**



Thank you!





MINERAL AREA COLLEGE

Park Hills, Missouri • (855) MAC-4YOU • www.MineralArea.edu